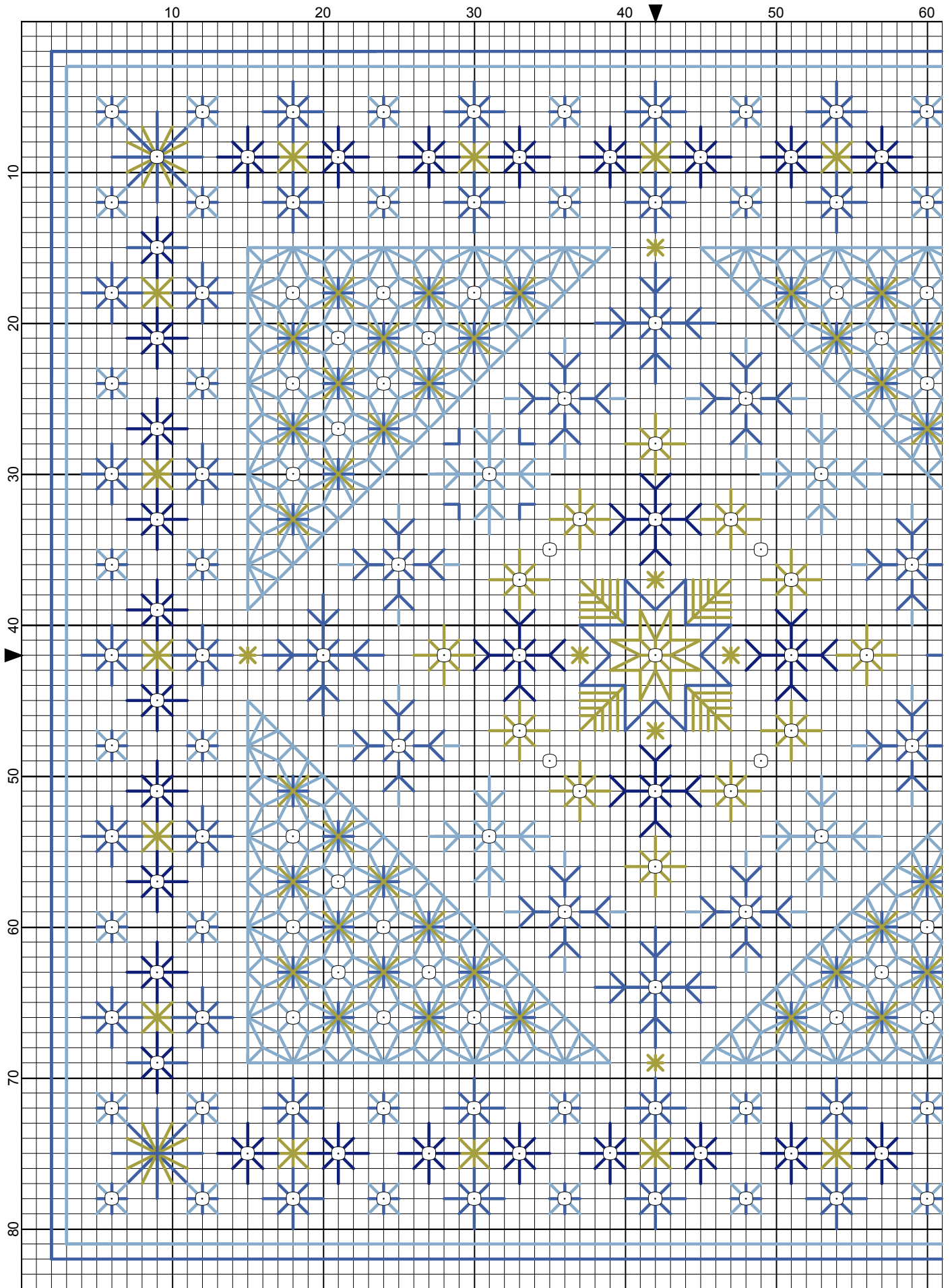
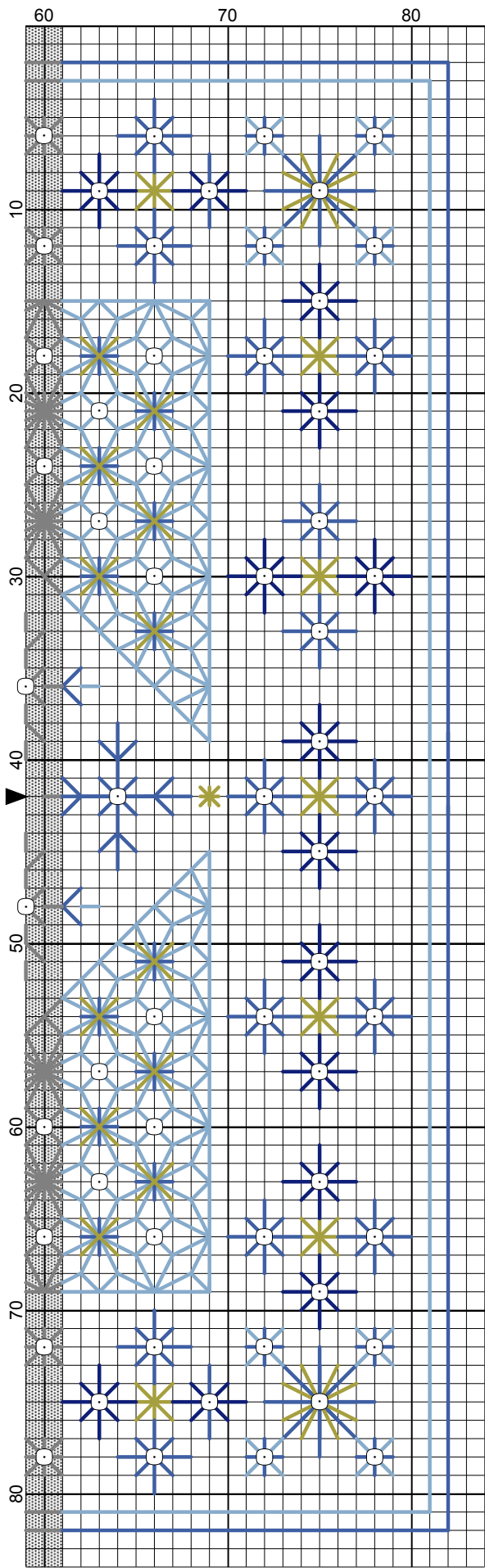


Wonderland



Elizabeth Almond

Wonderland



- Backstitches:
- DMC-809
 - DMC-798
 - DMC-796
 - DMM-5282

- Beads:
- MHG-2010

Elizabeth Almond

Wonderland

Author: Elizabeth Almond
Copyright: Elizabeth Almond
Grid Size: 84W x 84H
Design Area: 5.71" x 5.71" (80 x 80 stitches)

Backstitch Lines:

— DMC-809 delft blue — DMC-796 royal blue - dk
— DMC-798 delft blue - dk — DMM-5282 Gold

Beads:

○ MHG-2010 Mill Hill Glass Beads-Ice

Snowflakes create an instant wonderland, hiding all that is beneath is a delicate covering of flakes, each with their own unique pattern. Create your own winter wonderland using blues and metallic gold or silver,

Material:

28 count evenweave, 8 x 8 inches
(This design is not suitable for Aida).

Treads:

DMC stranded cotton:
796 Royal blue - dark one skein
798 Delft blue - dark, one skein
809 Delft blue, one skein
DMC Metallic 5282 Gold, one skein, or DMC Light Effects 3821 gold, one skein or DMC Light Effects Silver E168(5283)
White sewing cotton

Mill Hill glass beads:

2010 Ice, one packet

Tapestry Needle No.24

Beading needle

Stitches used:

Back stitch

Eyelet stitch small, vertical cross 798, diagonal cross 809

Star stitch - small gold star worked over 2 threads

- large star worked over two and 4 threads

Method:

Start from the centre of the design working outwards, using ONE strand of cotton or TWO strands of metallic thread for the back stitch.

Use DMC 5282 , DMC Light Effects 3821 or DMC Light Effects E168 for the back stitch, central star and the rays surrounding the star.

The thickness of the metallic thread should be equal to the thickness of the stranded cotton. Use short lengths of metallic thread to avoid fraying.

The flower triangles are worked in 809 with the eyelets worked in 798 and 3821.

Add the beads after the embroidery had been completed using white sewing cotton.

I hope you enjoy working ths design as much as I have enjoyed creating it.

If you have any queries please contact:

lizalmond@blackworkjourney.co.uk